

OMBIL Partnership Update

Partnerships in NRM PROSPECT Course

O&M Business Information Link

Home Overview People Business Support

OMBIL - Applications and Reports course dates: FY 2014 Sessions

Cancelled. Watch this space for updates.

Commander's Memo RE:

[Use of OMBIL \(PDF 739KB\)](#)

The POC for this page:
OMBIL Webmaster
ombil@usace.army.mil

Page Updated On:
November 15, 2016

Welcome

to the Operations and Maintenance Business Information Link (OMBIL) website

This site is the business information gateway for the Operations and Maintenance community. Users may access business-function specific tools for tracking outputs related to their project and program areas. This site also serves as the entry point for OMBIL, providing results-oriented management information and technical

For assistance in using the OMBIL site, please e-mail: ombil@usace.army.mil

USACE Home **Div Dist Ctr Lab FOA**

You Are Here **Civil Works**

"The views, opinions and findings contained in this report are those of the authors(s) and should not be construed as an official Department of the Army position, policy or decision, unless so designated by other official documentation."



US Army Corps
of Engineers®



Good Data Tells the Corps Story

1. Partnerships help get work done that we may not otherwise have the capability to do.
2. Partnerships build community support for the Corps and our programs, which can be leveraged in many other ways.
3. Partnerships help support our requests for the recreation and ES budgets: They demonstrate that we have strong and robust NRM programs that should be financially supported in our budgets.
4. Partnership data helps build internal support for our programs all the way up the line.

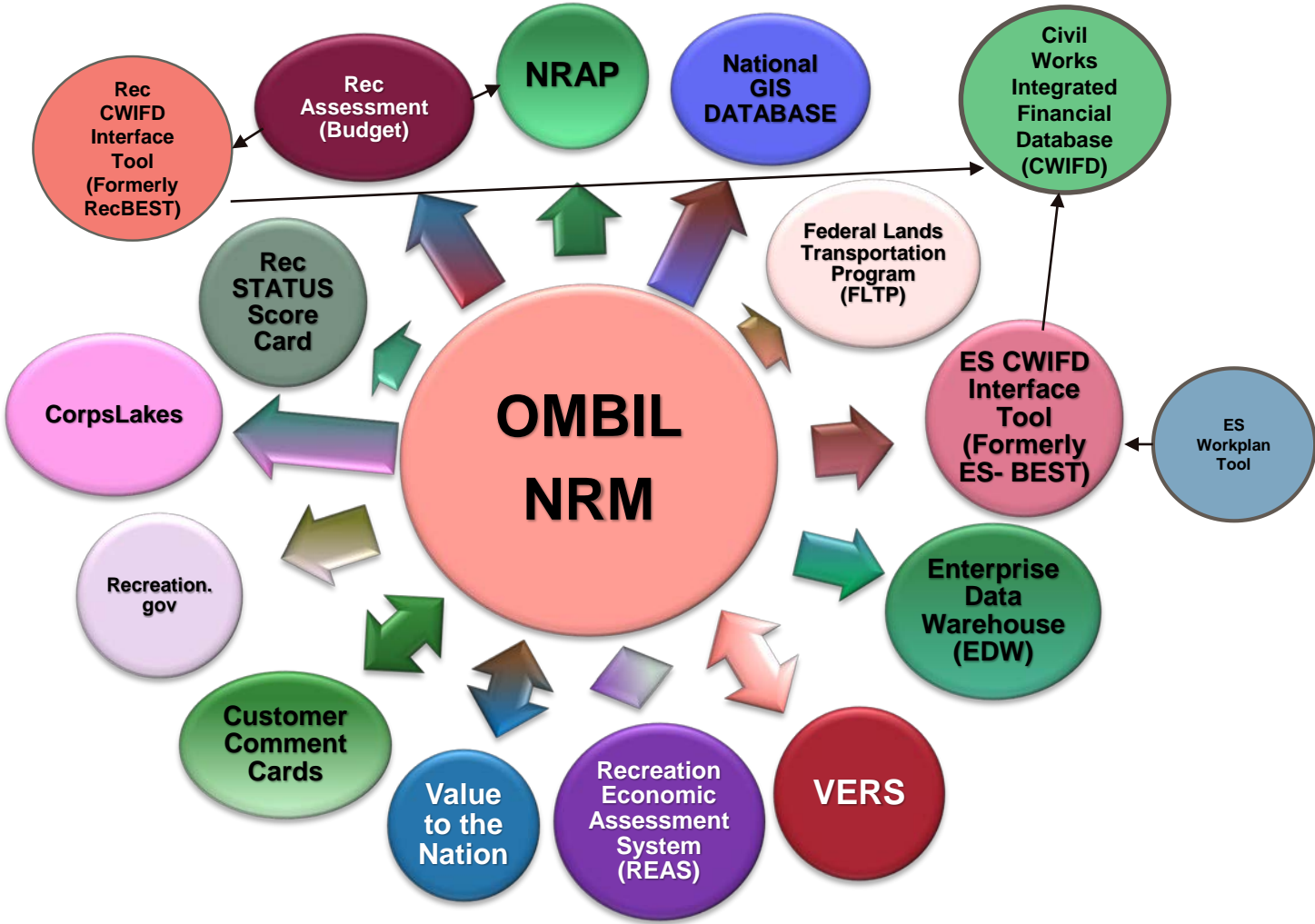


Interest not just in what we do, but who we work with

- Scout troops
- Tourism bureaus
- Youth service and conservation corps
- Outdoor recreation industry
- STEM-focused education groups



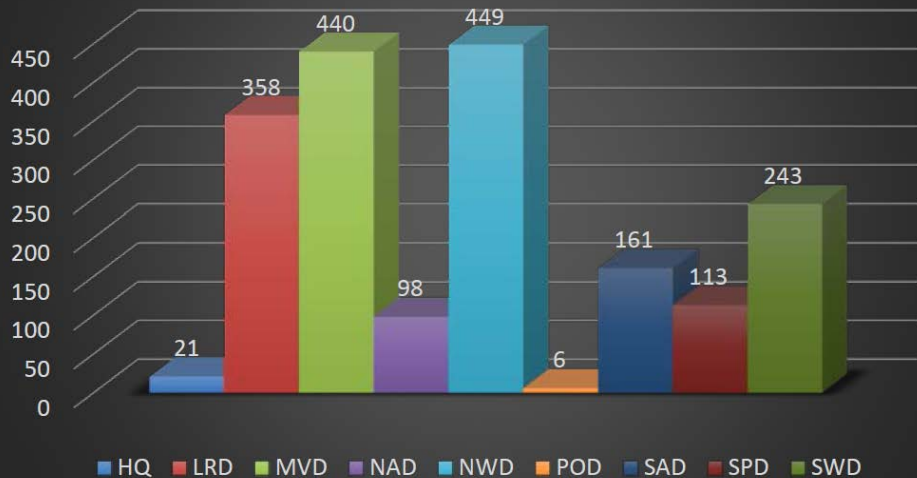
WHY OMBIL?



Partnerships In OMBIL

- FY 17 Partnership data in OMBIL: 1,889 partnerships with a total value of \$65.1 million (Corps: \$7.9 million investment/ Partner leveraged investment: \$57.1 million)

Partners Engaged



Growth of Partnerships





- Home
- Visitors
- Lake Discovery
- Recreation
- Env Compliance
- Env Stewardship
- Partners ?
- News/Events
- People
- Forums
- Learning
- GETS
- Tools
- New Postings
- Submit
- Index/Search ?

Partnerships in OMBIL

The Operations and Maintenance Business Information Link (OMBIL) was developed to provide a single location for data required to operate and manage the Operations function of the Corps. OMBIL contains modules for each business function, which currently include Navigation, Hydropower, Recreation, Environmental Stewardship, Environmental Compliance, Flood Risk Management, Water Supply, and Safety & Occupational Health. All business functions can be accessed through the [OMBIL Web page](#).

The Partnerships pages in OMBIL are currently located under the Recreation Business Function. Data Input Forms can be found in the Business Function Data Input screen, listed in the drop-down menu under "REC- Partnership Agreements" and Reports are listed in the drop-down menu under "REC- Partnership Detail Report." Access to the Data Input Forms requires special permissions through the OMBIL administrator. Reports can also be accessed through the Business Function Reports screen under "REC- Partnership Detail Report" by anyone with access to a Corps computer (no password or special permissions required).

Annual fiscal data entry for the Partnership pages opens each year October 1 - December 31 (on the REC- Annual Update data input form) to enter the value of each partnership for the prior fiscal year. However, new partnership agreements can be entered or edited at any time during the year.

Note: Partnership data entry involves a two-step process. Step 1 (Available anytime during the year): Enter information about the partnership, including agreement type, organization, organization type, date effective, description. Step 2 (Available only during annual update period Sep/Oct): Enter information about the value of the partnership, including number of volunteers, volunteer hours, partner funds invested, professional services provided, materials and equipment donated, Corps contract funds, services, materials and equipment, and additional investments.

● [Annual Reports](#)

● [Training Resources](#)

● [FAQs](#)



ombil
Partnerships



OMBIL Partnerships Annual Reports



- [Annual partnership tracking spreadsheet](#) This spreadsheet can be used to track most of the key data and information about partnerships that will help you during the OMBIL recreation annual update period (Oct-Dec)

- FY 17 Partnerships and Volunteers [Fact Sheet](#)
- FY 17 Partnerships [OMBIL Detail Report](#)
- FY 17 Volunteer Program [OMBIL Report for All USACE](#)
- FY 16 Partnerships and Volunteers [Fact Sheet](#)
- FY 16 Partnerships [OMBIL Detail Report](#)
- FY 16 Volunteer Program [OMBIL report for All USACE](#)
- FY 15 Partnerships [Fact Sheet](#)
- FY 15 Partnerships OMBIL ES-REC [Summary Report for All USACE](#)
- FY 15 Partnerships ES-REC [Detail Report for All USACE](#)
- FY 15 Volunteer Program [Fact Sheet](#)
- FY 15 Volunteer Service [OMBIL Report for All USACE](#)

- FY 14 Partnerships [Fact sheet](#)
- FY 14 Partnerships [Summary](#)
- FY 14 Partnerships Detail Report for all USACE – [pdf version](#)
- FY 14 Partnership Detail Report for all USACE – [Excel version](#)

- FY 13 Partnerships [Fact sheet](#)
- FY 13 Partnerships [Summary](#)
- FY 13 Partnerships Detail Report for all USACE – [pdf version](#)
- FY 13 Partnership Detail Report for all USACE – [Excel version](#)

- FY 12 Partnerships [Fact Sheet](#)
- FY 12 Partnerships Detail Report for all USACE – [pdf version](#)
- FY 12 Partnership Detail Report for all USACE – [Excel version](#)

- FY 11 Partnerships [Fact Sheet](#)
- FY 11 Partnerships Detail Report for all USACE – [pdf version](#)
- FY 11 Partnership Detail Report for all USACE – [Excel version](#)

- FY 10 Partnerships [Fact Sheet](#)
- FY 10 Partnership Detail Report for all USACE – [pdf version](#)
- FY 10 Partnership Detail Report for all USACE – [Excel version](#)

FY 17 Partnerships and Volunteer Program Summary Sheet

*Data from OMBIL

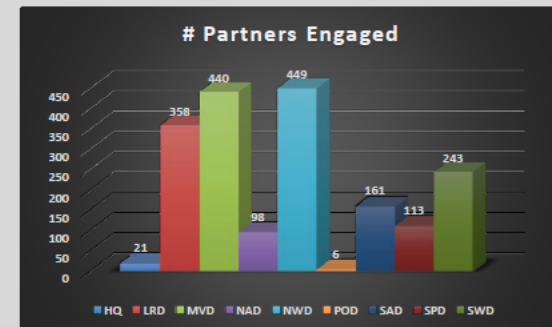
The Corps of Engineers' natural resource management mission is to manage and conserve natural resources, consistent with ecosystem management principles, while providing quality public outdoor recreation experiences to serve the needs of present and future generations. The challenges facing this mission require a new way of doing business, by increasing community engagement and collaboration to ensure we meet the needs of the public. Our partners and volunteers are organizations and people who want to give back to their communities and are interested in being involved in the Corps natural resource management program. Whether it is an environmental ethic, a love of parks, or enthusiasm for the outdoors, like-minded partners and volunteers share their expertise, resources, time and energy to work together toward common goals.

Total partners: 1,889

Corps projects with partnerships: 303 of 403 (74%)

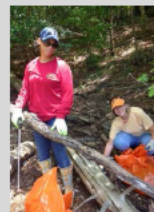
Total value of partnerships: \$65,077,327

(Corps: \$7.9 million investment/ Partner leveraged investment: \$57.1 million)



We strive to match our partners and volunteers' talents and interests with work to be done, in order to achieve our shared vision. While partners and volunteers are not a substitute for Corps management of the federal resources, they help accomplish programs and activities for which our funding is not available and therefore would not normally be performed. In FY 2017, 41% of our partnerships were for environmental stewardship projects, and 59% were for recreation projects.

- **Boy/Girl Scouts:** 2,690 scouts from 76 troops were able to complete eagle scout projects, learn new outdoor skills, beautify parks through shoreline cleanups, raise funds by recycling, perform service projects, earn badges, and participate in educational programs by park rangers to learn about natural resource careers



- **Cooperating associations:** 49 nonprofit associations held special events, operated bookstores, provided interpretive programs, and served as community advocates for the Corps
- **CVBs and businesses:** Almost 400 businesses, visitor bureaus, and chambers of commerce partnered with the Corps to offer recreation related services and supplies to visitors while also generating an economic benefit to the local communities.

Class Exercise

1. Go to the OMBIL Annual Reports page.
2. Open the FY17 Partnerships OMBIL Detail Report.
3. List how many partnerships your project or district had and the total value.
4. If you know of partnerships that took place and are not listed, write it down as a reminder for FY 18 data entry.



US Army Corps
of Engineers ®



Partnerships in OMBIL – Common Errors

MOUs or Challenge Partnership agreements with individuals

There are a number of entries in OMBIL with a single individual's name and an agreement type of challenge partnership or MOU where the only thing donated is time.

It appears that these would just be standard individual volunteers and should not be counted in the partnership section.



US Army Corps
of Engineers[®]



Partnerships in OMBIL – Common Errors

Special events

Many people forget that the contributions provided by partners is considered a partnership and has value.

Be sure to enter the partner info for Kids to Parks Day, National Public Lands Day, FLW fishing events, CAST fishing events, Get Outdoors Day, Bass Pro special events, etc.

The partner value should include the value of their time, and supplies they provide for the event (this can be booth space or marketing materials).



US Army Corps
of Engineers[®]



Entering National Public Lands Day (NPLD) Events

- 1) Enter volunteer data into the Volunteers module of OMBIL

- 2) Enter the event into the Partnerships module of OMBIL
 - a) If other partners are involved, list National Environmental Education Foundation (NEEF) as the primary partner and all others as co-partners
 - b) If no other partners are participating in the event, just list NEEF as the primary partner
 - c) Partner contribution should be the volunteer hours performed within the scope of the event.



US Army Corps
of Engineers[®]



Partnerships in OMBIL – Common Errors

National MOUs

If a partner is on the list of national MOUs and there is not some other agreement type involved in the project, make sure to select MOU. Many lakes also have local MOUs.



US Army Corps
of Engineers[®]



Partnerships in OMBIL – Common Errors

Cooperating Association

There is a pick-list for these associations. If you have an official association that is not on the list, let me know and I will get it added.

Every one of these organizations should have some type of value associated with them for the year.



US Army Corps
of Engineers[®]



Partnerships in OMBIL – Common Errors

Contributions

Volunteer service value for individuals should not be included in the partnership section of OMBIL, unless they have also contributed funds, material/ supplies.

Volunteers that work as part of an organization can be included here along with the value of funds, services, and materials contributed.



US Army Corps
of Engineers[®]





- Home
- Visitors
- Lake Discovery
- Recreation
- Env Compliance
- Env Stewardship
- Partners
- News/Events
- People
- Forums
- Learning
- GETS
- Tools
- New Postings
- Submit
- Index/Search

Partnerships in OMBIL

The Operations and Maintenance Business Information Link (OMBIL) was developed to provide a single location for data required to operate and manage the Operations function of the Corps. OMBIL contains modules for each business function, which currently include Navigation, Hydropower, Recreation, Environmental Stewardship, Environmental Compliance, Flood Risk Management, Water Supply, and Safety & Occupational Health. All business functions can be accessed through the [OMBIL Web page](#).

The Partnerships pages in OMBIL are currently located under the Recreation Business Function. Data Input Forms can be found in the Business Function Data Input screen, listed in the drop-down menu under "REC- Partnership Agreements" and Reports are listed in the drop-down menu under "REC- Partnership Detail Report." Access to the Data Input Forms requires special permissions through the OMBIL administrator. Reports can also be accessed through the Business Function Reports screen under "REC- Partnership Detail Report" by anyone with access to a Corps computer (no password or special permissions required).

Annual fiscal data entry for the Partnership pages opens each year October 1 - December 31 (on the REC- Annual Update data input form) to enter the value of each partnership for the prior fiscal year. However, new partnership agreements can be entered or edited at any time during the year.

Note: Partnership data entry involves a two-step process. Step 1 (Available anytime during the year): Enter information about the partnership, including agreement type, organization, organization type, date effective, description. Step 2 (Available only during annual update period Sep/Oct): Enter information about the value of the partnership, including number of volunteers, volunteer hours, partner funds invested, professional services provided, materials and equipment donated, Corps contract funds, services, materials and equipment, and additional investments.

● [Annual Reports](#)

● [Training Resources](#)

● [FAQs](#)



ombil
Partnerships



Entering Volunteer Hours Correctly

What OMBIL **DOESN'T** auto calculate:

- Total number of volunteer hours worked
 - Enter the TOTAL HOURS, not hours per volunteer
 - If you have 5 volunteers that worked 3 hours each, total volunteer hours should be 15 (not 3)

What OMBIL **DOES** auto calculate:

- Value of volunteer service
 - Automatically multiplies the total number of hours times the annual “value of volunteer service” set forth by the independent sector.



US Army Corps
of Engineers[®]



Volunteer Data Decision Tree

- Available on OMBIL Partnerships FAQ page:

<http://corpslakes.usace.army.mil/employees/faqs.cfm?Id=partner-OMBIL&Nav=partner&View=Yes>

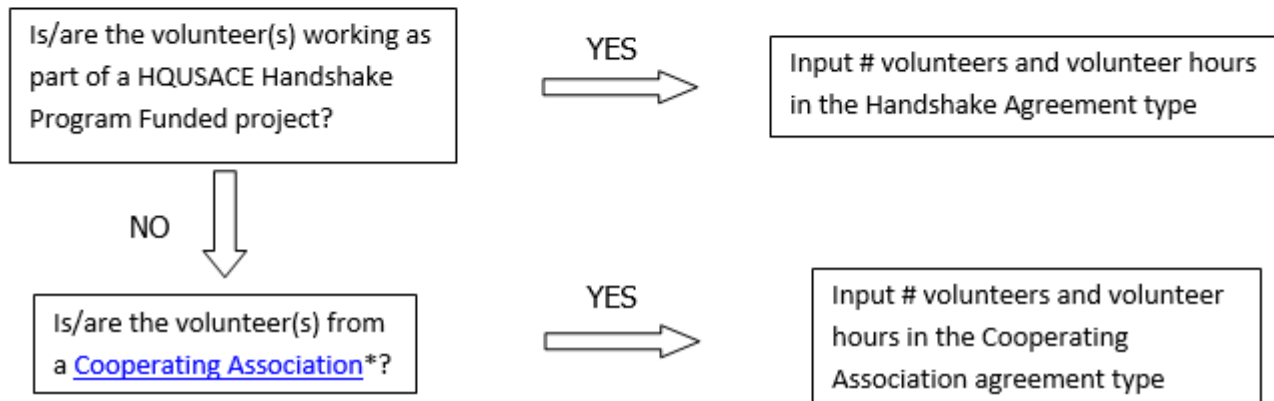
Step 1. Recreation Annual Update- Annual Project Data Update

Enter ALL volunteer hours in this section of OMBIL. This is where you will capture the total number of volunteers, total hours of volunteer service (which will auto-calculate the total value of the service), and total incidental expenses reimbursed to all volunteers for the FY.

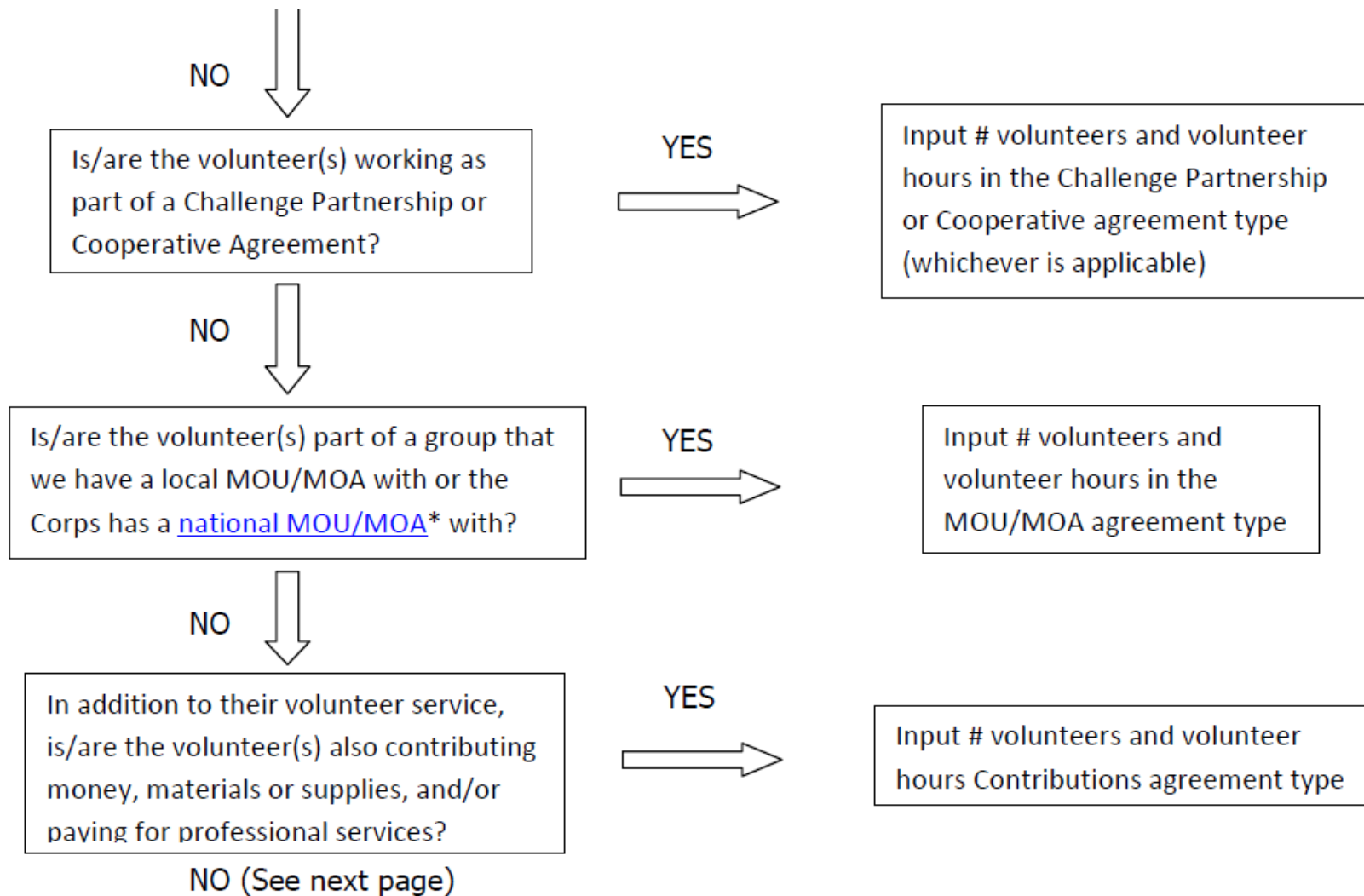
Step 2. Recreation Annual Update- Partnership Update

In addition to gathering information about the overall number of volunteers, hours, and value, we are also trying to capture more detailed data about volunteers that are part of a partnership. Some volunteers such as camp hosts, gate attendants, and other individuals who volunteer may only be counted in the Annual Project Data Update. Other volunteers that are part of a partner organization should also have their hours counted in the Partnership Update.


Please use the flow chart below to determine whether to count a particular individual volunteer's or group of volunteers' hours in the Partnership Update section of OMBIL.



Volunteer Data Decision Tree (Cont.)



Is the volunteer associated with an organization that doesn't have any other agreement type in place?

YES


Input # volunteers and volunteer hours in Contributions agreement type

If you answer No to all of the questions above, the data for these volunteers will ONLY be input in the Annual Project Data Update section of OMBIL. If you answer Yes to any of the questions above, input the data into the first category with a Yes answer starting from the top down. Some volunteers may fit into multiple categories, but you should input the data in the first applicable category encountered in the flow chart.

Example 1: A volunteer group from IMBA (International Mountain Biking Association) may provide service to the Corps as part of a Challenge Partnerships Agreement, but they are also part of a national MOU. Because the Challenge Partnership agreement is an agreement for a limited, specific period of time and project, the volunteer hours for the particular project in the agreement should be input in the Challenge Partnership category instead of the MOU. If IMBA also volunteers hours not related to the Challenge Partnership Agreement, those additional hours would be input separately in the MOU category.

Example 2: Volunteers from a Cooperating Association, such as the Friends of Raystown Lake provide services for a project that is part of a Handshake Agreement. These hours should be input in the Handshake category instead of the Cooperating Association category, because the Handshake agreement is for a specific project. Additional hours volunteered by Association members such as working in a bookstore, creating interpretive materials, or managing a campground should be captured in the Cooperating Association category if they are not specifically associated with the Handshake project.

Note: Although all Cooperating Associations set up their relationship with the Corps through a Cooperative Agreement, for the purposes of OMBIL, hours donated by members of a Cooperating Association should be input in the Cooperating Association category (or Handshake/Challenge Partnership if applicable to a specific project), not in the Cooperative Agreement category.

*See [NRM Gateway MOU/MOU page](#) for list of national organizations with MOU/MOA and [NRM Gateway Cooperating Association page](#) for list of associations in OMBIL. There is a pick-list of cooperating associations already in OMBIL. If you have a new cooperating association that is not on the list, please contact Heather Burke the get it added to the system.

Tracking Materials Costs

Make sure that materials costs are included in your partnership data.

- If a Boy Scout Troop comes to work on your project and they bring their own gloves, include the cost of gloves in their contribution.
- If a project vehicle is used to move materials to volunteer sites around the project, include an estimate for vehicle cost to your materials provided to the partnership.



US Army Corps
of Engineers[®]



Partnerships in OMBIL – Common Errors

Handshake

This partnership type should only be selected for those projects that have received handshake funds from HQUSACE in the past 3 fiscal years.

Once the handshake funded project is complete, if you still work with the partner in future years, you'll need to make that a new partnership type to reflect the work (i.e. contribution, MOU, challenge partnership as applicable)



US Army Corps
of Engineers[®]



Partnerships in OMBIL – Common Errors

Zero values in OMBIL

All of the prior year partners automatically load into the wizard.

If a particular partner did not do anything with the project this year, it needs to be marked as No Activity.

Do not put zeros in every data field if the partner was not active.



US Army Corps
of Engineers ®



Partnerships in OMBIL – Common Errors

Corps Value

We need to continue focusing on getting the Corps value entered in addition to the partner value.

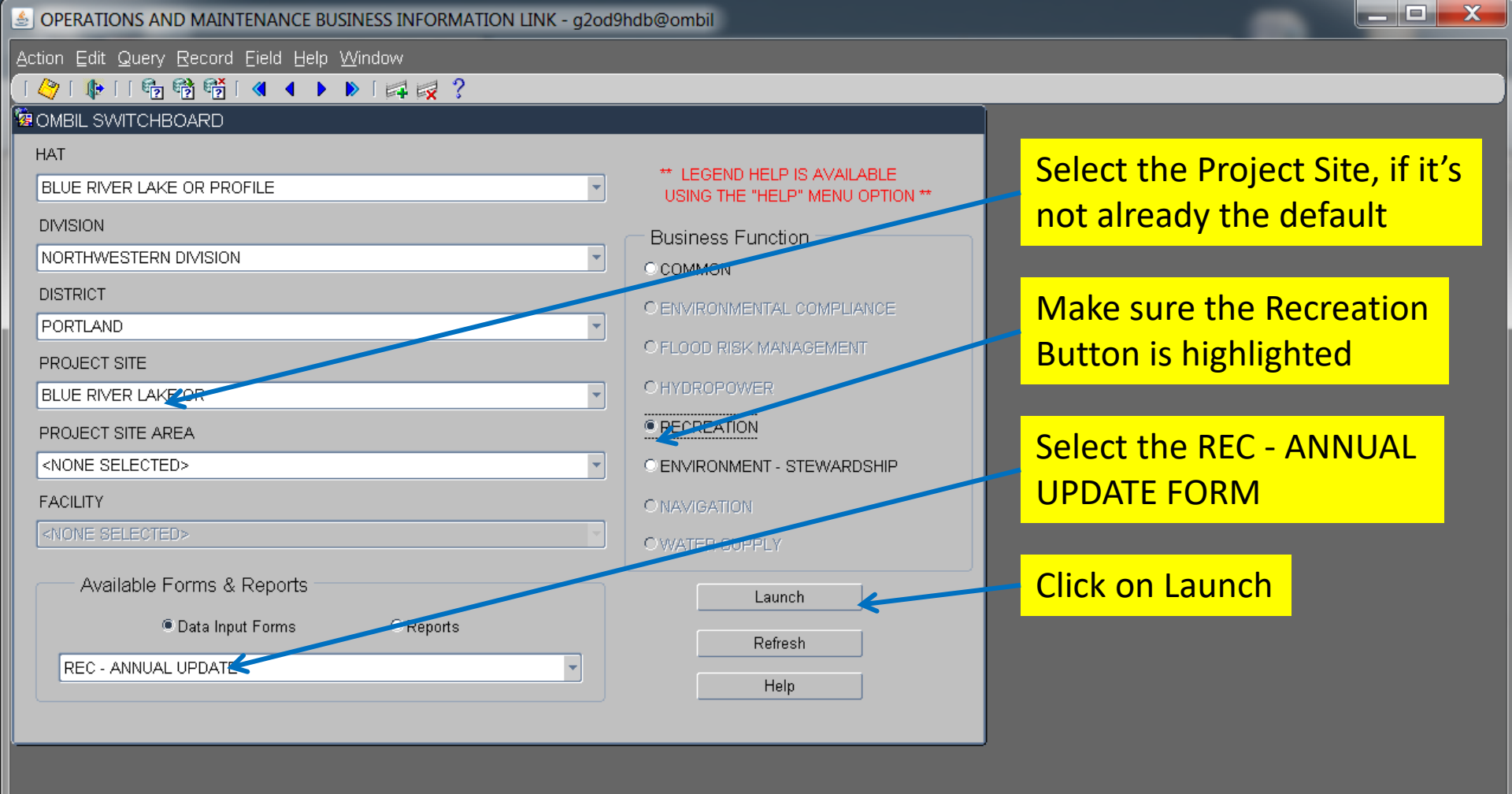
There is always going to be a value of an employee's time that should be captured in the Services column.

We are also missing out on a lot of materials/ equipment value that we bring to these partnerships.



US Army Corps
of Engineers ®





Select the Project Site, if it's not already the default

Make sure the Recreation Button is highlighted

Select the REC - ANNUAL UPDATE FORM

Click on Launch

You begin from the Switchboard, where you first select your Project, then check the Recreation button, then select the REC – ANNUAL UPDATE (Wizard) and click the Launch button.

IMPORTANT! The Annual Update wizard is only open for data entry between October 1 – 31 each year

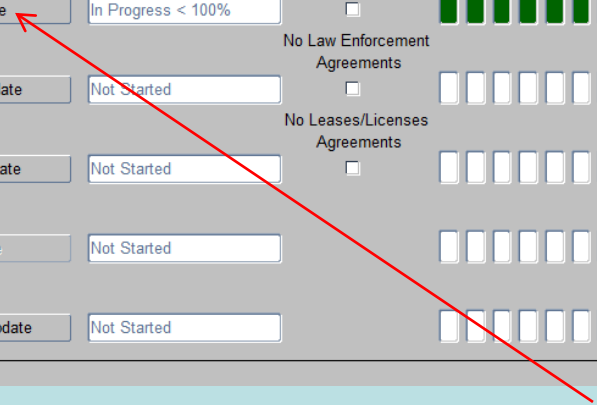
Project Site: HQ USACE
Fiscal Year: 2017

Annual Update

Do not click "Submit" until all steps below have been completed. Clicking this button will disable all steps on the Annual Update form. Contact ombil@usace.army.mil if this button has been clicked in error.

Submit

Step	Launch Form	Status	Progress	% Complete	Start Date	End Date
Step 1:	Project Site Update	Not Started	<input type="checkbox"/>	.00% Complete	01-OCT-2017	31-OCT-2017
Step 2:	Project Site Areas Update	Not Started	<input type="checkbox"/>	.00% Complete	01-OCT-2017	31-OCT-2017
Step 3:	Corps Managed Recreation Update	Not Started	<input type="checkbox"/> No Corps Managed Recreation Areas	.00% Complete	01-OCT-2017	31-OCT-2017
Step 4:	Interpretive Contacts Update	Not Started	<input type="checkbox"/> No Interpretive Contacts	.00% Complete	01-OCT-2017	31-OCT-2017
Step 5:	Special Events Update	Not Started	<input type="checkbox"/> No Special Events	.00% Complete	01-OCT-2017	31-OCT-2017
Step 6:	Facilities Update	Not Started	<input type="checkbox"/> No Facilities	.00% Complete	01-OCT-2017	31-OCT-2017
Step 7:	Partnerships Update	In Progress < 100%	<input checked="" type="checkbox"/> No Partnership Agreements	95.34% Complete	01-OCT-2017	31-OCT-2017
Step 8:	Law Enforcement Update	Not Started	<input type="checkbox"/> No Law Enforcement Agreements	.00% Complete	01-OCT-2017	31-OCT-2017
Step 9:	Leases/Licenses Update	Not Started	<input type="checkbox"/> No Leases/Licenses Agreements	.00% Complete	01-OCT-2017	31-OCT-2017
Step 10:	Boat Ramp Update	Not Started	<input type="checkbox"/>	.00% Complete	01-OCT-2017	31-OCT-2017
Step 11:	Annual Project Data Update	Not Started	<input type="checkbox"/>	.00% Complete	01-OCT-2017	31-OCT-2017



From the Overarching Wizard, click on the Partnerships Update button to begin the update process.

Action Edit Query Record Field Help Window

PARTNERSHIP AGREEMENTS

Agreement Type: ALL TYPES Organization: ALL ORGANIZATIONS Organization Type: ALL TYPES

Show Selected Create New Annual Data

Project Site: BARDWELL LAKE

Organization	Code	Agreement Type	Date Effective	Description	Terminated	
TEXAS EQUESTRIAN TRAIL RIDERS ASSOCIATION	COP	COOPERATING ASSOCIATION	14-MAR-2003	TETRA will will developpe, operate and maintai	...	<input type="checkbox"/> View/Edit
TEXAS EQUESTRIAN TRAIL RIDERS ASSOCIATION	MOA	MEMORANDUM OF UNDERSTANDING	01-OCT-2004	Horse Trail Maintenance, Installation188 hrs	...	<input type="checkbox"/> View/Edit
Wal-Mart	CNT	CONTRIBUTIONS PROGRAM	31-AUG-2010	Test of System	...	<input checked="" type="checkbox"/> View/Edit
U.S. FISH & WILDLIFE SERVICE	ECA	ECONOMY ACT PARTNERSHIP	31-AUG-2010	test of System	...	<input type="checkbox"/> View/Edit
BOY SCOUTS OF AMERICA	HCP	HANDSHAKE CHALLENGE PARTNEF	31-AUG-2010	Test of Sysytem	...	<input type="checkbox"/> View/Edit
Trail Dogs	CCS	CHALLENGE PARTNERSHIP	31-AUG-2010	Build Fitness trail	...	<input type="checkbox"/> View/Edit
First Baptist Church	MOA	MEMORANDUM OF UNDERSTANDING	31-AUG-2010	Maintain Fitness trail	...	<input type="checkbox"/> View/Edit
Cabellas	CNT	CONTRIBUTIONS PROGRAM	31-AUG-2010	Water Safety Supplies	...	<input type="checkbox"/> View/Edit
GIRL SCOUTS OF AMERICA	COA	COOPERATIVE AGREEMENT	01-APR-2011	Test	...	<input type="checkbox"/> View/Edit

- This screen shows all agreements listed in OMBIL for the Project Site (PS).
- If there are known agreements that don't show up in this list, the user must click on the "Create New" button and work through the screens to create a new agreement.
- If no new agreements need to be created, then click on the "Annual Data" button to start the update process or the "View/Edit " button to review and/or update basic partnership information.



WHAT - Basics of the Partnership Agreement

Partnership Agreement Type

CNT - CONTRIBUTIONS PROGRAM

Primary Business Line

Environment Stewardship

Primary Purpose

PED - EDUCATION

Description

Contribution of funds for interpretive panel production for new wetland

Partnership Agreement Type Description

The Corps is authorized to accept contributions of cash, funds, materials, and services from groups and individuals for operation and management of recreation facilities and protection and restoration of natural resources at civil works water resource projects. Contributions must be within current authorities, consistent within the Corps' mission, and for work items contained in

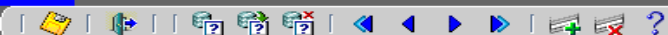
Primary Purpose Description

A partnership agreement, entered into for the benefit of public educational or interpretation activities including, but not limited to, water safety, environmental education, and corps missions.

Cancel

Next >>

Next is the description box, where the user gives a detailed explanation of the purpose of the agreement. This is limited to 255 characters, so be concise. Click "Next".



WIZARD

Filter on Organization Type?
 No Yes

Filter on National Organizations?
 No Yes

Filter on State?
 No Yes

Has Partnership at Project Site?
 No Yes

Type of Organization: FED - FEDERAL AGENCY (OTHER THAN CORP...)

National Organizations: U.S. FOREST SERVICE

States: MT MONTANA

Project Site: LIBBY DAM

Total number of Organizations that will be returned by above selections: 1

Organizations: U.S. FOREST SERVICE, KOOTENAI NATIONAL F...

Search Results: 158, 21, 1, 1

Use This One...

Organization Type: FEDERAL AGENCY (OTHER THAN CORPS AND MILITARY)

National Parent Organization: U.S. FOREST SERVICE

City: Libby State: MT Zip: Zip-Ext:

Street Address 1:

Street Address 2:

Organization Name: U.S. FOREST SERVICE, KOOTENAI NATIONAL FOREST

Organization Description: USFS - Kootenai National Forest is located in Northwestern Montana

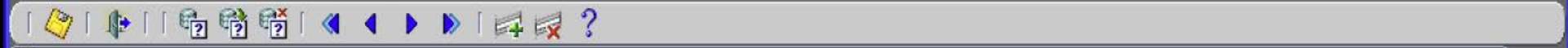
Use Above Clear Above

Recommendation:

Cancel

New Organization

When you click the “New Organization” button, the right hand side of the screen opens up to reveal the data fields necessary to create a new Organization listing.



WIZARD

<< Back Completed Required on WHAT

<< Back Completed Required on WHEN

<< Back Completed Required on WHO

Create

Cancel



Action Edit Query Record Field Help Window

PARTNERSHIP AGREEMENTS


Agreement Type: ALL TYPES Organization: ALL ORGANIZATIONS Organization Type: ALL TYPES

Show Selected Create New Annual Data

Project Site: BARDWELL LAKE

Organization	Code	Agreement Type	Date Effective	Description	Terminated	
TEXAS EQUISTRIAN TRAIL RIDERS ASSOCIATION	CO			enerate and maintai	<input type="checkbox"/>	View/Edit
TEXAS EQUISTRIAN TRAIL RIDERS ASSOCIATION	M			stallation1188 hrs	<input type="checkbox"/>	View/Edit
Wal-Mart	CF				<input checked="" type="checkbox"/>	View/Edit
U.S. FISH & WILDLIFE SERVICE	EC				<input type="checkbox"/>	View/Edit
BOY SCOUTS OF AMERICA	H				<input type="checkbox"/>	View/Edit
Trail Dogs	CO				<input type="checkbox"/>	View/Edit
First Baptist Church	M				<input type="checkbox"/>	View/Edit
Cabellas	CF				<input type="checkbox"/>	View/Edit
GIRL SCOUTS OF AMERICA	COA	COOPERATIVE AGREEMENT	01-APR-2011	Test	<input type="checkbox"/>	View/Edit
					<input type="checkbox"/>	View/Edit

NOTICE!!!



You must proceed to the Annual Data to update the financial information for each agreement. This can be done until 31-DEC-11. It must be completed in order to be 100% complete with the update.

OK

You will receive this message letting you know you still have to go through the “Annual Data” in order to complete the update process, so click on “OK”.

Action Edit Query Record Field Help Window

PARTNERSHIP AGREEMENTS

Agreement Type: ALL TYPES Organization: ALL ORGANIZATIONS Organization Type: ALL TYPES

Show Selected Create New Annual Data

Project Site: BARDWELL LAKE

Organization	Code	Agreement Type	Date Effective	Description	Terminated	
TEXAS EQUISTRIAN TRAIL RIDERS ASSOCIATION	COP	COOPERATING ASSOCIATION	14-MAR-2003	TETRA will will develop, operate and maintai	<input type="checkbox"/>	View/Edit
TEXAS EQUISTRIAN TRAIL RIDERS ASSOCIATION	MOA	MEMORANDUM OF UNDERSTANDIN	01-OCT-2004	Horse Trail Maintenance, Installation1188 hrs	<input type="checkbox"/>	View/Edit
Wal-Mart	CNT	CONTRIBUTIONS PROGRAM	31-AUG-2010	Test of System	<input checked="" type="checkbox"/>	View/Edit
U.S. FISH & WILDLIFE SERVICE	ECA	ECONOMY ACT PARTNERSHIP	31-AUG-2010	test of System	<input type="checkbox"/>	View/Edit
BOY SCOUTS OF AMERICA	HCP	HANDSHAKE CHALLENGE PARTNEF	31-AUG-2010	Test of Sysytem	<input type="checkbox"/>	View/Edit
Trail Dogs	CCS	CHALLENGE PARTNERSHIP	31-AUG-2010	Build Fitness trail	<input type="checkbox"/>	View/Edit
First Baptist Church	MOA	MEMORANDUM OF UNDERSTANDIN	31-AUG-2010	Maintain Fitness trail	<input type="checkbox"/>	View/Edit
Cabellas	CNT	CONTRIBUTIONS PROGRAM	31-AUG-2010	Water Safety Supplies	<input type="checkbox"/>	View/Edit
GIRL SCOUTS OF AMERICA	COA	COOPERATIVE AGREEMENT	01-APR-2011	Test	<input type="checkbox"/>	View/Edit
					<input type="checkbox"/>	View/Edit

This will take you back into the Partnership wizard and at this point we are ready to begin the update of the Annual Data, so click on the “Annual Data” button.



Fiscal Year

2016

Start

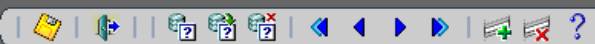
CHECK ALL PARTNERSHIPS WITH NO-ACTIVITY THIS FY

Organization	Partnership Type	Description	No Activity	Terminated
DISCOVER YOUR NORTHW	COOPERATING ASSOCIAT	Interpretive and e	<input type="checkbox"/>	<input type="checkbox"/>
NORTHWEST YOUTH CORP	COOPERATIVE AGREEME	Outdoor educatic	<input type="checkbox"/>	<input type="checkbox"/>
Skamania Co Noxious Weed	COOPERATIVE AGREEME	Analysis of both	<input type="checkbox"/>	<input type="checkbox"/>
SKAMANIA COUNTY	COOPERATIVE AGREEME	To allow work rel	<input type="checkbox"/>	<input type="checkbox"/>
BONNEVILLE POWER ADMI	MEMORANDUM OF UNDEF	MOA between th	<input type="checkbox"/>	<input type="checkbox"/>
FWEE Foundation for Water	MEMORANDUM OF UNDEF	Mission: The Fo	<input type="checkbox"/>	<input type="checkbox"/>
Leave No Trace	MEMORANDUM OF UNDEF	Encourages resp	<input checked="" type="checkbox"/>	<input type="checkbox"/>
National Park Service - Pacific	MEMORANDUM OF UNDEF	Ice Age Floods A	<input checked="" type="checkbox"/>	<input type="checkbox"/>
Northwest Discovery Water Tr	MEMORANDUM OF UNDEF	Northwest Disco	<input checked="" type="checkbox"/>	<input type="checkbox"/>
Northwest Weed Managemen	MEMORANDUM OF UNDEF	Cooperative wee	<input checked="" type="checkbox"/>	<input type="checkbox"/>



NEXT>>

- Check the No Activity box for any of the agreements that did not have activity during this report FY. (Do not show a partnership as Active and fill in all zeroes in the data fields.) Click Next.
- You will get a reminder to add any agreements that are not shown in the list.



ANNUAL UPDATE

Fiscal Year
 2016

Start

ACTIVE PARTNERSHIPS

Organization	Partnership Type	Description	
DISCOVER YOUR NORTHW	COOPERATING ASSOCIAT	Interpretive and e	...
NORTHWEST YOUTH CORP	COOPERATIVE AGREEME	Outdoor educatic	...
Skamania Co Noxious Weed	COOPERATIVE AGREEME	Analysis of both	...
SKAMANIA COUNTY	COOPERATIVE AGREEME	To allow work rel	...
BONNEVILLE POWER ADMI	MEMORANDUM OF UNDEF	MOA between th	...
FWEE Foundation for Water	MEMORANDUM OF UNDEF	Mission: The Fou	...
BONNEVILLE POWER ADMI	CONTRIBUTIONS PROGRA	Contributions rel:	...
Cowlitz County Corrections D	CONTRIBUTIONS PROGRA	Cowlitz County C	...
			...
			...

<<BACK

CREATE

NEXT>>

If you see that you are missing an active partnership, you can go through the create process from here too. If all are listed, you can click next.

Fiscal Year
2017

Start

NOTE! This page has been compressed to fit on the screen. In the actual OMBIL program, you will have to use the Scroll bar across the bottom to see all of the datafields.

COOPERATING ASSOCIATION

Organization	Description	Number of Volunteers	Volunteer Hours	Volunteer Rate	Value of Services	Value of Sales	Partner Value			Materials & Equipment Donated	Total Partner Value	Contract Costs	Corps Labor	Corps Costs		Total Amount
							Funds Invested	Professional Services Provided						Materials & Equipment	Total	
DISCOVER YOUR NORTHW	Interpretive and e	...			\$24.14	\$0					\$0				\$0	\$0

<<BACK

NOTE: You must fill in ALL data fields, even if the value is "0"

NEXT>>

All of the Cooperating Association Agreements that are active during the report FY will be displayed here. All the user needs to do is update the numbers for each agreement. Note the scroll bar to the left. If you have more agreements than will display on one page, you will need to scroll down to see the remainder. Use the lower scroll bar to Click "Next".

Fiscal Year
 2017

Start

MEMORANDUM OF UNDERSTANDING/MEMORANDUM OF AGREEMENT (MOU/MOA)

Organization	Description	Number of Volunteers	Volunteer Hours	Volunteer Rate	Value of Services	Partner Value			Total Partner Value	Corps Costs				Total Amount
						Funds Invested	Professional Services Provided	Materials & Equipment Donated		Contract Costs	Corps Labor	Materials & Equipment	Total Corps Costs	
BONNEVILLE POWER ADMINISTRATION	MOA between th ...	0	0	\$24.14	\$0	\$275150	\$0	\$0	\$275150	\$0	\$82550	\$0	\$82550	\$357700
FWEE Foundation for Water	Mission: The Fot ...			\$24.14	\$0				\$0				\$0	\$0
U.S. FOREST SERVICE	Columbia Gorge ...			\$24.14	\$0				\$0				\$0	\$0
WASHINGTON DEPARTMEN	Agreement to su ...	0	0	\$24.14	\$0	\$0	\$200	\$0	\$200	\$0	\$150	\$0	\$150	\$350

<<BACK

NEXT>>

NOTE! This page has been compressed to fit on the screen. In the actual OMBIL program, you will have to use the Scroll bar across the bottom to see all of the datafields.

All of the MOUs and MOAs that are active during the report FY will be displayed here. All the user needs to do is update the numbers for each agreement. Click "Next".

Fiscal Year
 2017

Start

HANDSHAKE PARTNERSHIP

Organization	Description	Number of Volunteer		Volunteer Rate	Value of Services	Partner Value		Materials & Equipment Donated	Total Partner Value	HQ Investment	Corps Costs			Total Corps Costs	Total Amount	
		Volunteers	Hours			Funds Invested	Professional Services Provided				Contract Costs	Corps Labor	Materials & Equipment			
Etowah Disc Golf	Contributions and	...	12	1520	\$24.14	\$36693	\$0	\$0	\$1635	\$38328	\$12500	\$3700	\$1800	\$100	\$18100	\$56428
		...														
		...														
		...														
		...														
		...														
		...														
		...														
		...														
		...														
		...														
		...														
		...														

<<BACK

NEXT>>

All of the Handshake Partnerships that are active during the report FY will be displayed here. Click "Next".

NOTE! This page has been compressed to fit on the screen. In the actual OMBIL program, you will have to use the Scroll bar across the bottom to see all of the datafields.

Fiscal Year

2017

Start

ECONOMY ACT

Organization	Description	Partner Value			Materials & Equipment Donated	Total Partner Value	Contract Costs	Corps Costs			Total Amount
		Funds Invested	Professional Services Provided					Corps Labor	Materials & Equipment	Total Corps Costs	
U.S. FOREST SERVICE, KO	Economy Act ag ...				\$0					\$0	\$0
US Public Health Service	Asbestos testing ...				\$0					\$0	\$0
	...										
	...										
	...										
	...										
	...										
	...										
	...										

All of the Economy Act Partnerships that are active during the report FY will be displayed here. All the user needs to do is update the Numbers for each agreement. Click “Next”.

Fiscal Year
 2017

Start

COOPERATIVE AGREEMENT

Organization	Description	Number of Volunteers	Volunteer Hours	Volunteer Rate	Value of Services	Partner Value			Materials & Equipment Donated	Total Partner Value	Corps Costs			Total Corps Costs	Total Amount
						Funds Invested	Professional Services Provided				Contract Costs	Corps Labor	Materials & Equipment		
AmeriCorps	AmeriCorps Inter	6	2140	\$24.14	\$51660	\$27250	\$0	\$0	\$78910	\$32873	\$11250	\$0	\$44123	\$123033	
NORTHWEST YOUTH CORP	Outdoor educatic	53	1995	\$24.14	\$48159	\$41379	\$0	\$0	\$89538	\$41343	\$3750	\$0	\$45093	\$134631	
Skamania Co Noxious Weed	Analysis of both	4	168	\$24.14	\$4056	\$0	\$0	\$0	\$4056	\$20000	\$3000	\$0	\$23000	\$27056	
SKAMANIA COUNTY	To allow work rel	5	3150	\$24.14	\$76041	\$0	\$0	\$0	\$76041	\$55125	\$12000	\$0	\$67125	\$143166	

<<BACK

NEXT>>

NOTE! This page has been compressed to fit on the screen. In the actual OMBIL program, you will have to use the Scroll bar across the bottom to see all of the datafields.

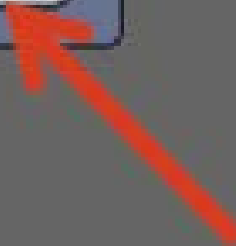
All of the Cooperative Agreement Partnerships that are active during the report FY will be displayed here. All the user needs to do is update the Numbers for each agreement. Click "Next".

Finished



Congratulations! You are finished reviewing agreements!

OK



US Army Corps
of Engineers[®]





ANNUAL UPDATE

Annual Update

Do not click "Submit" until all steps below have been completed. Clicking this button will disable all steps on the Annual Update form. Contact ombil@usace.army.mil if this button has been clicked in error.

Submit

Project Site
 HQ USACE

Fiscal Year
 2017

Step	Launch Form	Status	Progress	% Complete	Start Date	End Date
Step 1:	Project Site Update	Not Started	<div style="width: 0%;"></div>	.00% Complete	01-OCT-2017	31-OCT-2017
Step 2:	Project Site Areas Update	Not Started	<div style="width: 0%;"></div>	.00% Complete	01-OCT-2017	31-OCT-2017
Step 3:	Corps Managed Recreation Update	Not Started	<div style="width: 0%;"></div>	.00% Complete	01-OCT-2017	31-OCT-2017
		No Corps Managed Recreation Areas <input type="checkbox"/>				
Step 4:	Interpretive Contacts Update	Not Started	<div style="width: 0%;"></div>	.00% Complete	01-OCT-2017	31-OCT-2017
		No Interpretive Contacts <input type="checkbox"/>				
Step 5:	Special Events Update	Not Started	<div style="width: 0%;"></div>	.00% Complete	01-OCT-2017	31-OCT-2017
		No Special Events <input type="checkbox"/>				
Step 6:	Facilities Update	Not Started	<div style="width: 0%;"></div>	.00% Complete	01-OCT-2017	31-OCT-2017
		No Facilities <input type="checkbox"/>				
Step 7:	Partnerships Update	In Progress < 100%	<div style="width: 95.34%; background-color: green;"></div>	95.34% Complete	01-OCT-2017	31-OCT-2017
		No Partnership Agreements <input type="checkbox"/>				
Step 8:	Law Enforcement Update	Not Started	<div style="width: 0%;"></div>	.00% Complete	01-OCT-2017	31-OCT-2017
		No Law Enforcement Agreements <input type="checkbox"/>				
Step 9:	Leases/Licenses Update	Not Started	<div style="width: 0%;"></div>	.00% Complete	01-OCT-2017	31-OCT-2017
		No Leases/Licenses Agreements <input type="checkbox"/>				
Step 10:	Boat Ramp Update	Not Started	<div style="width: 0%;"></div>	.00% Complete	01-OCT-2017	31-OCT-2017
Step 11:	Annual Project Data Update	Not Started	<div style="width: 0%;"></div>	.00% Complete	01-OCT-2017	31-OCT-2017

The system brings you back to the Overarching wizard and updates the status to show that you are at 100% Complete for the Partnership Update. If you were anything less than 100%, you would be able to go back into the Partnership wizard and complete the update. Once you have finished, simply Exit this screen or proceed to another of the update wizards (any of the steps above).

Data Field Definitions

- **Value of sales** (only for cooperating associations) - total value of gross sales returned to the project in accordance with the agreement.
- **Funds invested** - total dollar amount of cash funds invested by the partner (excluding bookstore sales funds reinvested in project)
- **Professional services provided** - total \$ value of professional services (i.e. engineer donating time to draft up plans and specifications or a grant writer donating professional time to research and write a grant proposal, etc.) provided by the partner. Calculate the value by multiplying the number of hours served times the prevailing hourly service charge.
- **Materials & equipment donated** - total \$ value of materials and equipment provided by the partner. Calculate the value of equipment using the local hourly/daily rental rate cost



US Army Corps
of Engineers[®]



Data Field Definitions

- **HQ investment** (only for Handshake) - the total \$ value received from the Handshake Partnership money provided by HQUSACE
- **Contract Costs**- the total \$ value of services contracted by the Corps for use in conjunction with this agreement
- **Materials & Equipment provided** - the total \$ value of materials and equipment provided by the Corps
- **Corps Labor**- the total \$ value of staff time provided by the Corps. Calculate value of services by multiplying the number of hours served x the burdened hourly employee labor rate

These can all be found on the OMBIL website in the User Manuals and Reference Materials pages



OMBIL Changes Requested for FY 19

- Enable a query of multiple years in the Partnership Detail report
- Total Partner Value = Value of Services + Value of Sales + Funds Invested + Professional Services + Materials & Equipment (right now, it does not roll up value of services into the total partner value, so you have to manually add it to figure out the actual total partner value)
- Add field to collect number of Corps Annual Day Use passes issued to volunteers for 100 hours of service



US Army Corps
of Engineers[®]



Pulling Data from the Operations and Maintenance Business Information Link (OMBIL)

<https://ombil.usace.army.mil/>



US Army Corps
of Engineers[®]



Everyone Can Pull Data from OMBIL!

O&M Business Information Link

Home Overview People **Business** Support

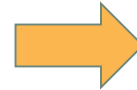
Welcome
to the Operations and Maintenance
Business Information Link (OMBIL)
website

This site is the business information gateway for the Operations and Maintenance community. Users may access business-function specific tools for tracking outputs related to their project and program areas. This site also serves as the entry point for OMBIL, providing results-oriented management information and technical.

For assistance in using the OMBIL site, please e-mail: ombil@usace.army.mil

Civil Works

Home | Overview | People | Business | Support



O&M Business Information Link

Home Overview People **Business** Support

Civil Works Operations and Maintenance Program Areas

From the program-area links on this page, users may access O&M summary information, site maps and image files, as well as individual data input and reporting modules. Within these business management information areas, users will also find ready-reference materials as well as links to web sites presenting associated topical information.

OMBIL EDW for All Business

Step 1:
Please select a category below to change the options at the right.

- All Business
- Navigation
- Locks
- Dredging
- Channel Portfolio Tool
- Hydropower
- Recreation**
- Environment - Stewardship
- Environmental Compliance
- Flood Risk Management
- Water Supply
- Safety & Occupational Health

Step 2:
All Business

- O&M Business Information Summaries (Oracle Express)**
- O&M Business Information Summaries (Enterprise Data Warehouse)**
- Maps, Images and Current Weather
- Commander's View
- User Manuals and Reference Materials
- Related Links
- Related USACE System Links

Available | Temporarily unavailable | Unavailable

Please use Internet Explorer 7.x browser to view O&M Business Information.

The Business Function Data Input and Reports Modules require the Java version 1.42 or higher; the Business Function Reports use Adobe Acrobat Reader. Installation instructions will be provided when users are initially enrolled.

Data entry in the business function modules requires user registration and is password controlled. Please send an e-mail to ombil@usace.army.mil with the following information:

<https://ombil.usace.army.mil/>

Everyone Can Pull Data from OMBIL!

O&M Business Information Link

Home Overview People Business Support

FY 14 PROSPECT course dates for OMBIL

The PROSPECT course for OMBIL for Operations, Program and Project Managers in the six major Corps business functions (navigation, hydropower, recreation, environment-stewardship, environmental compliance and water supply) has been cancelled for fiscal year 2014.

OMBIL EDW for Recreation

The OMBIL Recreation Business Line has published its initial module in the Enterprise Data Warehouse (EDW). This analytical reporting module is designed to replicate the data and information originally available to users in the OMBIL Business Summaries or "cubes." However, the EDW user interface provides an expanded and enhanced user experience, with the ability to save and re-run reports and readily share data output with others. In addition, as a registered user of the USACE EDW, you can access the entire suite of available standard USACE data and information in a single repository. For registration details please visit the EDW website at <https://edw.usace.army.mil>.

Step 1:

Please select a category below to change the options at the right.

- All Business
- Navigation
 - Locks
 - Dredging
 - Channel Portfolio Tool
- Hydropower
- Recreation
- Environment - Stewardship
- Environmental Compliance
- Flood Risk Management
- Water Supply
- Safety & Occupational Health

Step 2:

Recreation

- O & M Business Information Summaries (Oracle Express)**
- O & M Business Information Summaries (Enterprise Data Warehouse)**
- Maps, Images and Current Weather**
- Business Function Data Input (LIPASS/ORACLE (database) Password required)**
- Business Function Reports**
- User Manuals and Reference Materials**
- Related Links**

Available Temporarily unavailable Unavailable

Please use Internet Explorer 7.x browser to view O&M Business Information.

The Business Function Data Input and Reports Modules require the Java version 1.42 or higher; the Business Function Reports use Adobe Acrobat Reader. Installation instructions will be provided when users are initially enrolled.

Data entry in the business function modules requires user registration and is password controlled. Please send an e-mail to ombil@usace.army.mil with the following information:

For assistance related to the modules and associated data, please e-mail ombil@usace.army.mil

<https://ombil.usace.army.mil/>

If there's a request to run Java... run it!



US Army Corps of Engineers[®]



Three Business Line Options for Partnerships Data Pulls

Recreation Data

OMBIL SWITCHBOARD

SELECT THE LOCATION **** LEGEND HELP IS AVAILABLE USING THE "HELP" MENU OPTION ****

DIVISION
GREAT LAKES AND OHIO RIVER DIV

DISTRICT
BUFFALO

PROJECT SITE
BLACK ROCK CHANNEL AND TONAWANDA HARBOR

PROJECT SITE AREA
<NONE SELECTED>

FACILITY
<NONE SELECTED>

SELECT THE BUSINESS FUNCTION

Business Function

- COMMON
- ENVIRONMENTAL COMPLIANCE
- FLOOD RISK MANAGEMENT
- HYDROPOWER
- RECREATION
- ENVIRONMENT - STEWARDSHIP
- NAVIGATION
- WATER SUPPLY

Available Reports

REC - PARTNERSHIP DETAIL REPORT

Launch

Help

Version 3

SELECT THE BUSINESS FUNCTION

Business Function

- COMMON
- ENVIRONMENTAL COMPLIANCE
- FLOOD RISK MANAGEMENT
- HYDROPOWER
- RECREATION
- ENVIRONMENT - STEWARDSHIP
- NAVIGATION
- WATER SUPPLY

Available Reports

REC - PARTNERSHIP DETAIL REPORT

Available Reports

REC - PARTNERSHIP SUMMARY REPORT (8.5 X 14)

Available Reports

REC - VOLUNTEER SERVICE SUMMARY REPORT



US Army Corps
of Engineers[®]



Three Business Line Options for Partnerships Data Pulls

Environmental Stewardship Data

OMBIL SWITCHBOARD

SELECT THE LOCATION **** LEGEND HELP IS AVAILABLE USING THE "HELP" MENU OPTION ****

DIVISION
GREAT LAKES AND OHIO RIVER DIV

DISTRICT
NASHVILLE

PROJECT SITE
BARKLEY DAM AND LAKE BARKLEY

PROJECT SITE AREA
BARKLEY DAM AND POWER PLANT

FACILITY
BARKLEY DAM

SELECT THE REPORT

Available Reports
E-S - PARTNERSHIP DETAIL REPORT

SELECT THE BUSINESS FUNCTION

Business Function

- COMMON
- ENVIRONMENTAL COMPLIANCE
- FLOOD RISK MANAGEMENT
- HYDROPOWER
- RECREATION
- ENVIRONMENT - STEWARDSHIP
- NAVIGATION
- WATER SUPPLY

Launch

Help

Version 3

SELECT THE BUSINESS FUNCTION

Business Function

- COMMON
- ENVIRONMENTAL COMPLIANCE
- FLOOD RISK MANAGEMENT
- HYDROPOWER
- RECREATION
- ENVIRONMENT - STEWARDSHIP
- NAVIGATION
- WATER SUPPLY

Available Reports

E-S - PARTNERSHIP DETAIL REPORT

Available Reports

E-S - PARTNERSHIP SUMMARY REPORT



US Army Corps
of Engineers[®]



Three Business Line Options for Partnerships Data Pulls

Common Data (Rec and ES)

OMBIL SWITCHBOARD

SELECT THE LOCATION ** LEGEND HELP IS AVAILABLE USING THE "HELP" MENU OPTION **

DIVISION
GREAT LAKES AND OHIO RIVER DIV

DISTRICT
NASHVILLE

PROJECT SITE
BARKLEY DAM AND LAKE BARKLEY

PROJECT SITE AREA
BARKLEY DAM AND POWER PLANT

FACILITY
BARKLEY DAM

SELECT THE BUSINESS FUNCTION

Business Function

- COMMON
- ENVIRONMENTAL COMPLIANCE
- FLOOD RISK MANAGEMENT
- HYDROPOWER
- RECREATION
- ENVIRONMENT - STEWARDSHIP
- NAVIGATION
- WATER SUPPLY

SELECT THE REPORT

Available Reports

COMMON - PARTNERSHIP DETAIL REPORT

Launch

Help

Version 3

SELECT THE BUSINESS FUNCTION

Business Function

COMMON

ENVIRONMENTAL COMPLIANCE

FLOOD RISK MANAGEMENT

HYDROPOWER

RECREATION

ENVIRONMENT - STEWARDSHIP

NAVIGATION

WATER SUPPLY

Available Reports

COMMON - PARTNERSHIP DETAIL REPORT



US Army Corps
of Engineers ®



The Report in OMBIL

After you launch the OMBIL Module, put in the data you're searching for into the report request and click "Run Report"

PARTNERSHIP DETAIL REPORT

Hierarchy of Report
SELECTED PROJECT SITE

Division
GREAT LAKES AND OHIO RIVER DIV

District
NASHVILLE

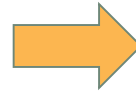
Project Site
BARKLEY DAM AND LAKE BARKLEY

Fiscal Year
2015

CSV

Run Report

Version 1



624253_17298417761.csv [Read-Only] - Excel

SECURITY WARNING Application add-ins have been disabled. Enable Content

Report Title:

	A	B	C	D	E	F	G	H	I	J	K	L	M	N	O
1	Report Title	PARTNERSHIP DETAIL REPORT													
2	For:	FY2015													
3	Hierarchy:	SELECTED PROJECT SITE													
4	Division:	GREAT LAKES AND OHIO RIVER DIV													
5	District:	NASHVILLE													
6	Project Site:	BARKLEY DAM AND LAKE BARKLEY													
7	Report Run	#####													
8															
9		PARTNERS PRIMARY I ORGANIZA	CO-PARTN	DESCRIPTI	PRIMARY I	NUMBER	NUMBER	(VOLUNTEI	VOLUNTEI	VALUE OF	VALUE OF	NUMBER	(FUNDS	IN	PROFES
10		CHALLENG	Recreator	LYON COUNTY TOUR	Partnershi	RC	0	0	0	23.07	0				7000
11		CHALLENG	Recreator	CITY OF KUTTAWA	Partnershi	RC	0	0	0	23.07	0				125000
12		CHALLENG	Recreator	CITY OF KUTTAWA	Installatio	RC	0	0	0	23.07	0				300
13		MEMORAF	Environme	National Environme	Partner wi	ES	0	7	42	23.07	969				0
14		MEMORAF	Health anc	FLW Foundation	Partner wi	RC	0	0	0	23.07	0				0
15		CONTRIBL	Health anc	WCCCK Radio	Partnered	RC	0	1	16	23.07	369				1000

Pulling Data from the Enterprise Data Warehouse (EDW)



US Army Corps
of Engineers[®]



Enterprise Data Warehouse



DEDICATED TO DELIVERING RELIABLE ACCESS
TO CRITICAL INFORMATION AND BUSINESS INTELLIGENCE

ABOUT



EDW PRODUCTION

EDW Production Reports & Dashboards

SHAREPOINT PORTAL

Briefings, Release Notes, Governance



REQUEST ACCESS

First Time Users **MUST** Start Here



USER AGREEMENT



HELP DESK

Report a Problem



LOCAL DATA

Access the Local Data Portal



EDW USER TRAINING

Training Materials and Development
Resources



CRYSTAL REPORTS DEVELOPER TRAINING

Crystal Reports Training Site



US Army Corps
of Engineers[®]



Home Documents

View ▾ New ▾ Organize ▾ Send ▾ More Actions ▾ Details

My Documents

Folders

- Public Folders
 - AED
 - APPMS
 - Content POCs For Corporate Reports
 - ERDC
 - EVM
 - FEM
 - HNC BMO
 - Human Resources
 - Military Programs
 - OMBIL
 - P2 Corporate Reports
 - PMBP
 - RBC
 - Real Estate
 - Regional Reports
 - Shared Folders

Title ▲	Type	Instances	Description	Cre
AED	Folder		Afghanistan Engineering District reports.	Feb
APPMS	Folder			Jan
Content POCs For Corporate Reports	Folder			Jan
ERDC	Folder			Jur
EVM	Folder			Jul
FEM	Folder			Apr
HNC BMO	Folder			Oct
Human Resources	Folder			Feb
Military Programs	Folder			Sep
OMBIL	Folder			A
P2 Corporate Reports	Folder		P2 Corporate Reports	Jul
PMBP	Folder			Jan
RBC	Folder		Contains reports for the EDW RBC applicator	Oct
Real Estate	Folder			De
Regional Reports	Folder			Oct

Search

Public folders are available to all that have access to EDW. Inside of the public folders are the various databases (universes) that contribute to EDW. Each database or universe decides what data will be available and which reports.

Home Documents

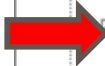
View New Organize Send More Actions Details

My Documents

Folders

- OMBIL
 - All Business Financial
 - Environmental Compliance
 - ERDC
 - FRM
 - Hydropower
 - MSC Ops Chiefs
 - Navigation
 - NRM
 - Water Supply
 - Waterborne Commerce
- P2 Corporate Reports
- PMBP
- RBC
- Real Estate

Title	Type
AED	Folder
APPMS	Folder
Content POCs For Corporate Reports	Folder
ERDC	Folder
EVM	Folder
FEM	Folder
HNC BMO	Folder
Human Resources	Folder
Military Programs	Folder
OMBIL	Folder
P2 Corporate Reports	Folder
PMBP	Folder
RBC	Folder
Real Estate	Folder
Regional Reports	Folder



The OMBIL Folder contains information entered by each business line into the OMBIL database, along with additional information such as financial information.

Home Documents

View New Organize Send More Actions Details

My Documents

Folders

- OMBIL
 - All Business Financial
 - Environmental Compliance
 - ERDC
 - FRM
 - Hydropower
 - MSC Ops Chiefs
 - Navigation
 - NRM
 - Environment Stewardship
 - NRM (Combined)**
 - Recreation
 - Water Supply
 - Waterborne Commerce
- P2 Corporate Reports
- PMBP
- RBC

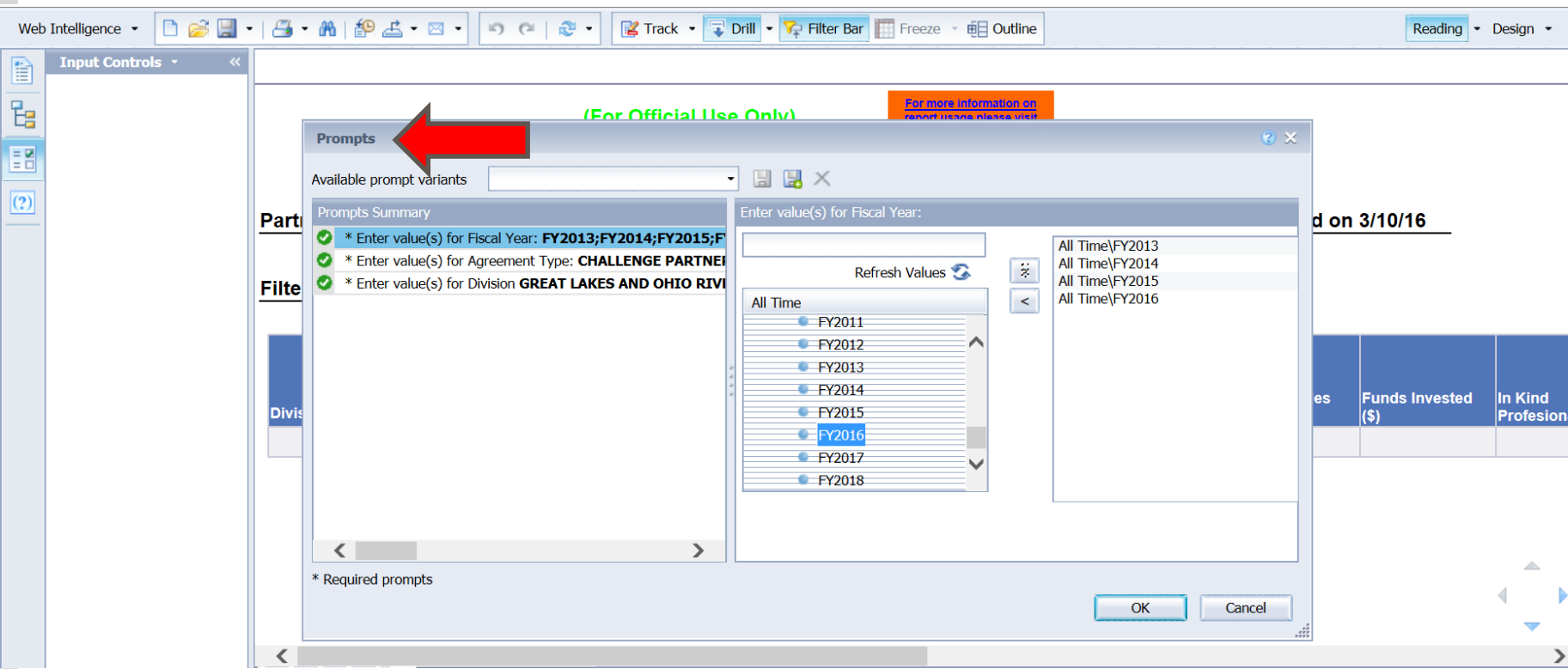
Search

Title ^	Type	Instances	Description
OMBIL Citation Officers	Web Intelligence	0	Report displays number of personnel
OMBIL ES Master Plan Compliance	Web Intelligence	0	Report displays master plan compliance
OMBIL NRM Combined Report	Web Intelligence	0	Report displays master plan compliance
OMBIL NRM Partnerships	Web Intelligence	0	Report displays Partnership Agreements
OMBIL NRM Project Site Acres Details	Web Intelligence	0	Report displays project sites details
OMBIL Recreation Annual Interpretive Contacts	Web Intelligence	0	Report displays the details of the Annual
OMBIL Recreation Annual Special Events	Web Intelligence	0	Report displays the details of the Annual
OMBIL Recreation Citations and Warnings	Web Intelligence	0	Report displays the total counts of citations
OMBIL Recreation Shoreline Management	Web Intelligence	0	Report displays the details of shoreline



Under OMBIL, the folder NRM contains both Environmental Stewardship and Recreation data. The NRM (combined) folder contains data that applies to both business lines.





When selecting a report, prompts will guide user to certain selections... in this case, fiscal years that are available. If one isn't available, user can add. Other prompts involve the type of agreement and divisions.

Home Documents OMBIL NRM Partners...

Web Intelligence | Track | Drill | Filter Bar | Freeze | Outline | Reading | Design

Input Controls | State (All values) | FY2016 | Agreement Type (All values) | Business Function (All values)

Map Reset

Document Input controls

Report Input controls (5)

Business Function

- Select (All)
- Environment - Steward
- Natural Resources Mana
- Recreation

Fiscal Year

- Select (All)
- FY2013
- FY2014
- FY2015
- FY2016

Division

- Select (All)
- GREAT LAKES AND C
- HQ USACE
- MISSISSIPPI VALLE

District

Partnerships (For Official Use Only)

Page No. 1/1 | Last Resheshed on 3/14/17

Filters: FY2016

Division	Division Number of Agreements (#)	Volunteers Hours for Partnership Agreements (HRS)	Volunteers for Partnership Agreements (#)	Value Of Services(\$)	Value Of Sales (\$)	Funds Invested (\$)	In Kind Professional
GREAT LAKES AND OHIO RIVER DIV	241	54,691	5,870	1,288,519.96	25,143	174,183	27
HQ USACE	12	4,787	18	112,781.72	0	710,800	5
MISSISSIPPI VALLEY DIVISION	391	69,132	4,610	1,628,749.92	54,865	421,137	69
NORTH ATLANTIC DIVISION	70	21,045	1,341	495,820.2	99,058	252,950	60
NORTHWESTERN DIVISION	261	50,842	3,990	1,197,837.52	248,213	33,088,624	2,17
PACIFIC OCEAN DIVISION	5	1,126	165	26,528.56	0	0	0
SOUTH ATLANTIC DIVISION	112	43,883	7,537	1,033,883.48	21,310	88,371	7

Partnerships | PS Partnerships

At the top of the report, notice the various filters available. This will allow you to filter to specific information such as year.

Also note on the left hand side, the input controls panel. This also allows you to filter or pick certain business lines, years, divisions, districts, etc. that you want to appear in the report.



This view shows the additional information available in the report. Note the two tabs at the bottom. Much like an excel spreadsheet, in EDW, multiple reports may be available under one topic or area.

State	Contribution In Kind(\$)	Total Partner Value(\$)	HQ Investment (\$)	Contract Funds (\$)	Corps Materials Equipment (\$)	Services Provided by the Corps(\$)	Total Corps Value(\$)	Additional Investment(#)	Total Amount (\$)
275,550	79,158	554,034	23,308	60,603	36,353	207,580	327,844	8,200	2,178,597.96
52,500	192,203	955,503	0	50,015	0	119,838	169,853	0	1,238,137.72
693,871	419,700	1,589,573	62,250	331,746	136,139	625,183	1,155,318	57,637	4,431,277.92
608,332	185,696	1,146,036	45,956	22,048	78,050	265,331	411,385	10,000	2,063,241.2
2,176,737	273,196	35,786,770	145,000	479,664	132,333	6,347,102	7,104,099	6,026	44,094,732.52
0	2,650	2,650	0	0	0	1,037	1,037	0	30,215.56
76,424	110,559	296,664	36,036	65,076	41,773	104,916	247,801	60	1,578,408.48

Partnerships PS Partnerships

Home Documents OMBIL NRM Partners... Web Intelligence

Track Drill Filter Bar Freeze Outline Reading Design

Input Controls: Division (All values) FY2016 Agreement Type (All values) Business Function (All values)

Map Reset Document Input controls Report Input controls (5)

Business Function:

- Select (All)
- Environment - Steward
- Natural Resources Mana
- Recreation

Fiscal Year:

- Select (All)
- FY2013
- FY2014
- FY2015
- FY2016

Division:


- Select (All)
- GREAT LAKES AND C
- HQ USACE
- MISSISSIPPI VALL

Division	District	Project Site(USACE)	Project Site ID	Number of Agreements (#)	Volunteers Hours for Partnership Agreements (HRS)	Volunteers for Partnership Agreements (#)	Value Of Services(\$)
GREAT LAKES AND C	BUFFALO	MT MORRIS LAKE - 011940	1079	19	3,629	380	85,4
	BUFFALO	Sum:			3,629		85,4
	DETROIT	DULUTH-SUPERIOR HARBOR MINNESOTA	1185	1	1,530	42	36,1
	DETROIT	Sum:			1,530		36,1
	HUNTINGTON	ALUM CREEK LAKE - 000280	956	5	536	31	12,6
		ATWOOD LAKE - 012070	348757	1	0	0	
		BEACH CITY LAKE - 012070	348767	1	0	0	
		BEECH FORK LAKE - 001280	957	2	188	27	4,4
		BELLEVILLE LOCK - OHIO RIVER LOCKS AND DAMS HUN	10155	1	0	0	
		BLUESTONE LAKE - 001830	965	2	106	21	2,4
		BOLIVAR DAM - 012070	348758	1	0	0	
		BURNSVILLE LAKE - 002270	959	3	1,048	15	24,6
		CHARLES MILL LAKE - 012070	348759	1	0	0	
		CLENDENING LAKE - 012070	348760	1	0	0	

In Reading mode, the user may change the prompts, the filters, or the input controls. The user may also toggle between the various report tabs available. The user may export the report as an excel spreadsheet, or email the report to other EDW Users. Note: in order to make design changes, the user must first save the report to his or her favorites folder.

File Properties Report Elements Formatting Data Access Analysis Page Setup Reading Desi

Tables Cell Section Chart Other Tools Position Linking Table Layout Behaviors

Save Ctrl+S Save As  =NameOf([Project Site(USACE)])

New Map Reset

Document Input controls

Report Input controls (5)

Business Function

- Select (All)
- Environment - Steward
- Natural Resources Mana
- Recreation

Fiscal Year

- Select (All)
- FY2013
- FY2014
- FY2015
- FY2016

Division

- Select (All)

Division	District	Project Site(USACE)	Project Site ID	Number of Agreements (#)	Volunteers Hours for Partnership Agreements (HRS)	Volunteers for Partnership Agreements (#)	Va Se
GREAT LAKES AN	BUFFALO	MT MORRIS LAKE - 011940	1079	19	3,629	380	
	BUFFALO	Sum:			3,629		
	DETROIT	DULUTH-SUPERIOR HARBOR MINNESOTA	1185	1	1,530	42	
	DETROIT	Sum:			1,530		
	HUNTINGTON	ALUM CREEK LAKE - 000280	956	5	536	31	
		ATWOOD LAKE - 012070	348757	1	0	0	
		BEACH CITY LAKE - 012070	348767	1	0	0	
		BEECH FORK LAKE - 001280	957	2	188	27	
		BELLEVILLE LOCK - OHIO RIVER LOCKS AND DAMS HUN	10155	1	0	0	
		BLUESTONE LAKE - 001830	965	2	106	21	



File Properties Report Elements Formatting Data Access Analysis Page Setup Reading Design

Tables Cell Section Chart Other Tools Position Linking Table Layout Behaviors

Input Controls New Map Reset Document Input controls Report Input controls (5)

Business Function

- Select (All)
- Environment - Steward
- Natural Resources Mana
- Recreation

Fiscal Year

- Select (All)
- FY2013
- FY2014
- FY2015
- FY2016

Division

- Select (All)
- GREAT LAKES AND C
- HOUSACE

Save As

1 of 2+

Favorites Folder

- Favorites Folder**

Public Folders

Title	Last Run Time
~Webintelligence	
ABC EXPENDITURES BY BUSINESS LINE Report includes CEFSM expenditures (total and bro	
ABC EXPENDITURES BY BUSINESS LINE - FY10-FY Report includes CEFSM expenditures (total and bro	
ABC EXPENDITURES BY BUSINESS LINE - TEST Report includes CEFSM expenditures (total and bro	
ABC EXPENDITURES BY BUSINESS LINE FY16	

File Name: OMBIL NRM Partnerships

Save As Type: Web Intelligence

Save Cancel

Business Function (All values)

Partnerships	Volunteers for Partnership Agreements (#)	Value C Service
3,629	380	
3,629		
1,530	42	
1,530		
536	31	
0	0	
0	0	
188	27	
0	0	
106	21	

Home Documents OMBIL NRM Partnerships

View New Organize Send More Actions Details 1 of 2+

My Documents

- My Favorites
- Inbox

Title	Type	Instances	Description	Created On
~Webintelligence	Folder			Aug 28, 2014 7:46 AM
OMBIL NRM Partnerships	Web Intelligence	0	Report displays Partnership Agree	Mar 14, 2017 2:41 PM
OMBIL Recreation Revenues Test	Web Intelligence	0	Report contains revenues measures	Jan 25, 2017 12:30 PM
OMBIL Recreation Revenues Day Use	Web Intelligence	0	Report contains revenues measures	Jan 18, 2017 9:55 AM
OMBIL Recreation Day Use and Annual Pass Revenue	Web Intelligence	0	Report contains revenues measures	Jan 18, 2017 9:00 AM
OMBIL ERDC Rec Status Project Site Areas	Web Intelligence	0	Report displays ERDC requested da	Nov 2, 2016 5:18 PM
OMBIL Visitor Project Site Area Data	Web Intelligence	0	This report displays Visitor Project S	Nov 2, 2016 5:15 PM
OMBIL Recreation Revenues - Golden Age	Web Intelligence	0	Report contains revenues measures	Oct 31, 2016 11:46 AM
FY15 OMBIL Recreation Camping Revenues CEFMS	Web Intelligence	0	Report contains revenues measures	Oct 27, 2016 2:32 PM
OMBIL Recreation Project Site Area with Open and Cl	Web Intelligence	0	Report has 2 tabs to displays Project	Oct 27, 2016 1:02 PM
OMBIL CEFMS Expenditures WCC	Web Intelligence	0	Report displays CEFMS expenditure	Oct 26, 2016 2:14 PM
OMBIL Recreation Inhouse Expenditures with remaini	Web Intelligence	0	Report includes CEFMS Inhouse exp	Oct 24, 2016 3:20 PM
ABC EXPENDITURES BY BUSINESS LINE FY16	Web Intelligence	0	Report includes CEFMS expenditure	Sep 22, 2016 1:12 PM
FY16 - FY12 OMBIL CEFMS Expenditures ES	Web Intelligence	0	Report displays CEFMS expenditure	Sep 22, 2016 1:04 PM
OMBIL CEFMS Expenditures ES TEST	Web Intelligence	0	Report displays CEFMS expenditure	Sep 22, 2016 1:03 PM

Folders

Search

My Favorites is the user's folder where all saved reports may be located, along with the location for any user designed reports. If saved in this location, the reports will refresh with new data once opened.

(For Official Use Only) [For more information on report usage please visit the help page.](#)

Recreation - Partnerships Page No. 1/3 Last Refreshed on 3/15/17

Filters: FY2016

Division	District	Project Site(USACE)	Project Site ID	Number of Agreements (#)	Volunteers Hours for Partnership Agreements (HRS)	Volunteers for Partnership Agreements (#)	Value Of Services(\$)
GREAT LAKES AND C	BUFFALO	MT MORRIS LAKE - 011940	1079	19	3,629	380	85,4
	BUFFALO		Sum:		3,629		85,4

Once the user opens the report, they can change into “Design” mode for editing purposes. All functions in the tabs across the top become active and available. From here the possibilities are endless. ARE YOU INTERESTED?



What Partnerships Do You Have??



US Army Corps
of Engineers[®]

